

T13N

R2W



**Office of the Monroe County Surveyor**  
**Trohn Enright-Randolph**

---

Health Services Building  
119 West 7<sup>th</sup> Street  
Bloomington, IN 47404  
Phone: (812) 349-2570

Dear User,

The following images were obtained in 2017 by the Office of the Monroe County Surveyor from the State Imaging and Microfilm Laboratory at the Indiana State Archives. The field notes and plats for Morgan County are stored on microfilm Reel 7534 at the Indiana State Archives. Each page provided by the State Imaging and Microfilm Laboratory is approximately 18MB. Our office combined the pages by Township & Range and reduced the resulting pdfs. This process may have caused some degradation in quality. We will provide unreduced images of specific pages if required. Please contact us at 812-349-2570 or at [SurveyorsOffice@co.monroe.in.us](mailto:SurveyorsOffice@co.monroe.in.us) to request a higher quality image of any specific page.

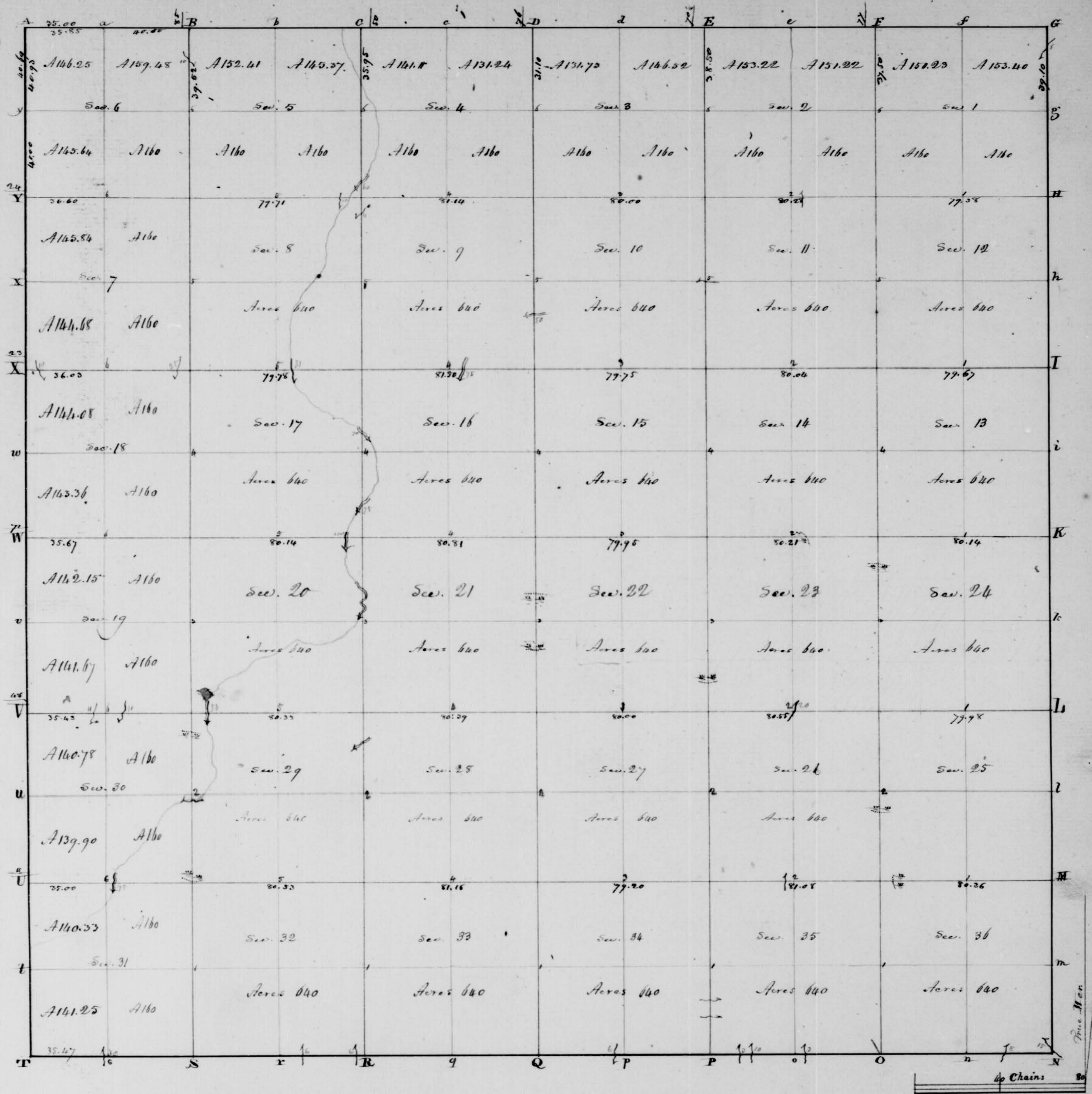
The pdfs are bookmarked with the original page numbers as assigned by the State Imaging and Microfilm Laboratory.

Be prepared to provide the county name, reel number, and the required page numbers when requesting full sized images.

If you would like a DVD of an entire county, please provide us with one DVD per county along with a self-addressed, stamped envelope.

Trohn Enright-Randolph  
Monroe County Surveyor





Township N. XIII North, Range N. II West 2<sup>nd</sup> Mer.

Surveyed by John Milroy... 1819.

Description of the Soil on the interior Sectional lines.

Between Sections	Quality &c.	Between Sections	Quality &c.	Between Sections	Quality &c.
25 & 26	Rolling & poor Poplar, Beech, Ash, Hickory, Sugar &c.	2 & 3	Level 1 <sup>st</sup> & 2 <sup>nd</sup> mile rich, last & thin Soil	31 & 32	Level rich, Wet bottom, Ash, Poplar, Hickory, Buckeye &c.
23 & 24	Swampy	33 & 34	2 <sup>nd</sup> mile, Beech, Poplar, Ash & Hickory	31 & 32	2 <sup>nd</sup> mile, level
22 & 23	Same, Maple, Sugar, Oak, Sweet Gum & Elm	28 & 29	Same, level	29 & 30	Same
24 & 25	Same	27 & 28	Wet & level	29 & 30	Swampy - part 2 <sup>nd</sup> mile
23 & 24	Same	26 & 27	2 <sup>nd</sup> mile, level	30 & 31	First & 2 <sup>nd</sup> mile rich, last & 2 <sup>nd</sup> mile
13 & 14	Poor, Beech, Sugar, Ash & Poplar	21 & 22	Level rich, Beech, Sugar, Poplar, Hickory & Ash	19 & 20	2 <sup>nd</sup> mile, Beech, Oak, Poplar & Hickory
13 & 14	Level & rich, some wet, Oak, Ash, Walnut, Poplar & Pine	18 & 19	Rich, Swampy	17 & 18	Same (level)
12 & 13	Same	18 & 19	2 <sup>nd</sup> mile, level	17 & 18	Same
11 & 12	Same	10 & 11	Same	5 & 6	Same, level
1 & 2	First & 2 <sup>nd</sup> mile, same last & thin Soil	9 & 10	Same	4 & 5	First & 2 <sup>nd</sup> mile, 2 <sup>nd</sup> mile, last & 2 <sup>nd</sup> mile
1 & 2	Level, same wet	3 & 4	Same	5 & 6	2 <sup>nd</sup> mile, level, Beech, Poplar & Ash
34 & 35	Level, rich	3 & 4	Same	5 & 6	Same
26 & 27	Same	32 & 33	2 <sup>nd</sup> mile, timber Same	30 & 31	Overgrown bottom, Beech, Sugar, Walnut, Ash & Elm
26 & 27	First & 2 <sup>nd</sup> mile, Rolling last & level 2 <sup>nd</sup> mile	28 & 29	Level & poor	19 & 20	2 <sup>nd</sup> mile, Rolling
23 & 24	Swampy	28 & 29	First & 2 <sup>nd</sup> mile, poor last & rich	18 & 19	First & 2 <sup>nd</sup> mile, 2 <sup>nd</sup> mile, last & rich bottom
22 & 23	Same	21 & 22	Level, poor	7 & 8	2 <sup>nd</sup> mile
14 & 15	Same	20 & 21	Level, Oak, Ash, Beech, Poplar, Walnut & Elm		
14 & 15	First & 2 <sup>nd</sup> mile, last & dry	16 & 17	Wet		
14 & 15	Level & dry, Ash, Poplar, Beech, Sugar, Gum, Pine &c.	16 & 17	Level & rich, timber Same		
10 & 11	First & 2 <sup>nd</sup> mile rich, last & poor	9 & 10	Same		
9 & 10	Rich & wet	8 & 9	2 <sup>nd</sup> mile, level		
		4 & 5	Same		



# Township No. 13. North of Range No. 2 West 2<sup>nd</sup> Mer. Ind.

## South Boundary. v. 35 E.

West On a Random line On the South Boundary of Sec. 36, T. 13, R. 2, W.  
 20. 00 To a Bush 5 links wide, Course S. E. June 6<sup>th</sup> 1819  
 40. 00 Set a temp<sup>o</sup> post for the cor. of 1/4 Sec.  
 50. 00 Set a " " " " " " Sec. 35 & 36.  
 Land rolling & good for farming Timber Buck Sugar  
 Poplar, Oak & Ash.

West On a Random line On the South Boundary of Sec. 35, T. 13, R. 2, W.  
 36. 00 To a Bush 3 links wide, Course N. E.  
 40. 00 Set a temp<sup>o</sup> post for the cor. of 1/4 Sec.  
 61. 00 To a Bush 10 links wide Course S.  
 66. 00 To a Sho 3. " " " S.  
 80. 00 Set the temp<sup>o</sup> post for the cor. of Sec. 34 & 35.  
 Land & Timber same as on the last mile.

West On a Random line On the South Boundary of Sec. 34, T. 13, R. 2, W.  
 40. 00 To a temp<sup>o</sup> post for the cor. of 1/4 Sec.  
 41. 00 To a Bush 6 links wide, Course S.  
 80. 00 Set a temp<sup>o</sup> post for the cor. of Sec. 33 & 34.  
 Land & Timber same as on the last mile.

West On a Random line On the South Boundary of Sec. 33, T. 13, R. 2, W.  
 40. 00 Set a temp<sup>o</sup> post for the cor. of 1/4 Sec.  
 80. 00 Set the temp<sup>o</sup> post for the cor. of Sec. 32 & 33.  
 Land & Timber same as on the last mile.

West On a Random line On the South Boundary of Sec. 32, T. 13, R. 2, W.  
 5. 00 To a Bush 6 links wide, Course S.  
 30. 00 To a Sho 6. " " " S.  
 40. 00 Set a temp<sup>o</sup> post for the cor. of 1/4 Sec.  
 80. 00 Set a " " " " " " Sec. 31 & 32.  
 Land & Timber same as last mile.



## T. N. 13. A. R. N. 2. W. 2nd Mer. Ind.

West On a Randon line On the South Bound<sup>y</sup> of Sec. 31. T. 13. S. R. 2. W.  
 40. 00 Set a temp<sup>t</sup> post for the cor. of 1/4 Sec.  
 42. 00 To a Brook 30 links wide; Course N.  
 75. 47 Intersect the Range line 60 links North of the temp<sup>t</sup> post  
 cor. of Towns 12. & 13. N. Range 2. & 3. W.  
 Land rich and good for farming. Similar same as last mile.

East On the True line On the South Boundary of Sec. 31. T. 13. S. R. 2. W.  
 35. 47 Set the post for the cor. of 1/4 Sec. from which a  
 N. Oak 30 in diam. bears S. 65. E. 3. links dist. and a  
 N. Oak 30. " " N. 74. W. 13. " "  
 75. 47 Set a post for the cor. of Sec. 31. & 32. from which a  
 Buck 20 in diam. bears N. 68. W. 32 links dist. & a  
 No. 30. " " S. 28. E. 17. " "

East On the True line On the South Boundary of Sec. 32. T. 13. S. R. 2. W.  
 11. 00 Set the post for the cor. of 1/4 Sec. from which a  
 Buck 12 in diam. bears N. 36. W. 11 links dist. & a  
 No. 4. " " S. 70. E. 28. " "  
 51. 00 Set a post for the cor. of Sec. 32. & 33. from which a  
 Buck 18 in diam. bears S. 63. W. 14 links dist. and a  
 Poplar 12 " " N. 83. E. 14. " "

East On the True line On the South Bound<sup>y</sup> of Sec. 33. T. 13. S. R. 2. W.  
 11. 00 Set a post for the cor. of 1/4 Sec. from which a  
 Buck. 27 in diam. bears S. 88. W. 15 links dist. and a  
 No. 18. " " N. 74. E. 34. " "  
 80. 00 Set a post for the cor. of Sec. 33. & 34. from which a  
 Buck 14 in diam. bears West 7 links dist. & a  
 No. 9. " " S. 14. E. 7. " "

East On the True line On the South Bound<sup>y</sup> of Sec. 34. T. 13. S. R. 2. W.  
 10. 00 Set a post for the cor. of 1/4 Sec. from which a

## T. N. 13. A. R. N. 2. W. 2nd Mer. Ind.

Buck 12 in diam. bears N. 49. W. 24 links dist. and a  
 No. 12. " " S. 68. E. 3. " "  
 80. 00 Set a post for the cor. of Sec. 34. & 35. from which an  
 Elm 9 in diam. bears S. 64. W. 9 links dist. and a  
 Sugar 9. " " N. 55. E. - " "

East On a True line On the South Bound<sup>y</sup> of Sec. 35. T. 13. S. R. 2. W.  
 40. 00 Set a post for the cor. of 1/4 Sec. from which a  
 Buck 27 in diam. bears S. 24. W. 21 links dist. and a  
 No. 11. " " N. 35. E. 14. " "  
 80. 00 Set a post for the cor. of Sec. 35. & 36. from which a  
 Poplar 12 in diam. bears S. 74. W. 4 links dist. and a  
 No. 12. " " N. 56. E. 30. " "

East On the True line on the South Boundary of Sec. 36. T. 13. S. R. 2. W.  
 40. 00 Set a post for the cor. of 1/4 Sec. from which a  
 Sugar 12 in diam. bears S. 87. W. 17 links dist. and a  
 Hickory 18. " " S. 30. E. 1. " "  
 80. 00 To the post for the cor. of Towns 12. & 13. North Range 1. & 2. W.

East Boundary. N. 6. 15 E.  
 North On the East Boundary of Sec. 36. T. 13. S. R. 2. W.  
 10. 00 To a Brook 15 links wide; Course N. June 13. 18. 19.  
 40. 00 Set a post for the cor. of 1/4 Sec. from which a  
 Buck 18 in diam. bears N. 11. E. 45 links dist. & a  
 Hickory 10. " " S. 45. W. 12. " "  
 80. 00 Set a post for the cor. of Sec. 35. & 36. from which a  
 Maple 14 in diam. bears N. 65. E. 5 links dist. and a  
 N. Oak 18. " " N. 84. W. 12. " "  
 Land low & wet. post swamp. June 13. 1819

North On the East Boundary of Sec. 35. T. 13. S. R. 2. W.  
 40. 00 Set a post for the cor. of 1/4 Sec. from which a



## T. N 13. S. R. N 2. W. 2nd Mer. Ind:

B. Ash 8 in diam. bears S 65. E. 25. links dist. and a  
 Buck 5. " " " S. 67. W. 1. " "  
 50. 00 Set a post for the cor. of Sec. 24 & 25. from which a  
 Buck 9 in diam. bears S. 31. E. 11. links dist. and a  
 So 10. " " " S. 50. W. 37. " "  
 Land well. Part wet & swampy. Timber Buck. Oak  
 Hickory Gum &c. Land good for farming.

North On the East Boundary of Sec. 24. T. 13. S. R. N 2. W.  
 40. 00 Set a post for the cor. of 1/4 Sec. from which a  
 Elm 9 in diam. bears S 52. W. 6. links dist. and a  
 So 12. " " " S. 31. E. 41. " "  
 50. 00 Set a post for the cor. of Sec. 13 & 24. from which a  
 Buck 18 in diam. bears S. 29. E. 34. links dist. and a  
 So 12. " " " S. 21. W. 15. " "  
 Land and Timber same as last mile.

North On the East Boundary of Sec. 13. T. 13. S. R. N 2. W.  
 40. 00 Set a post for the cor. of 1/4 Sec. from which a  
 B. Oak 40 in diam. bears S 18. E. 10 links dist. & a  
 Buck 12 " " " S. 73. W. 32 " "  
 50. 00 Set a post for the cor. of Sec. 12. & 13. from which a  
 Buck 30 in diam. bears S. 88. E. 7. links dist. and a  
 So " " " S. 55. W. 24 " "  
 Land well & good for farming. Timber Buck. Sugar. Elm  
 Gum &c.

North On the East Boundary of Sec. 13. T. 13. S. R. N 2. W.  
 40. 00 Set a post for the cor. of 1/4 Sec. from which a  
 Buck 18 in diam. bears S. 20. W. 39. links dist. and a  
 Elm 18 " " " S. 24. E. 51. " "  
 50. 00 Set a post for the cor. of Sec. 1 & 12. from which a  
 Buck 18 in diam. bears S. 25. E. 13. links dist. and a

## T. N 13. S. R. N 2. W. 2nd Mer. Ind:

Logwood 3 in diam. bears S 20. W. 6 links dist.  
 Land and Timber same as in the last mile.

North On the East Boundary of Sec. 1. T. N 13. S. R. N 2. W.  
 40. 00 Set a post for the cor. of 1/4 Sec. from which a  
 Buck 20 in diam. bears S 15. E. 32. links dist. and a  
 Hickory 5. " " " S. 87. W. 16. " "  
 40. 00 To a Buck 6 links wide. Course S. W. (Standing)  
 79. 10 To the post cor. of Towns 13 & 14 North Ranges 1 & 2. West

## North Boundary

West On a Random line on the North Boundary of Sec. 36. T. 14. S. R. 2. W.  
 19. 00 To a Buck 50 links wide; Course S.  
 40. 00 Set a temp. post cor. of 1/4 Sec.  
 50. 00 Set a temp. " " " Sec. 35. & 36.  
 Land level & wet. Timber. Buck. Hickory. Elm & Maple

West On a Random line on the North Bound. of Sec. 35. T. 14. S. R. 2. W.  
 40. 00 Set the temp. post for the cor. of 1/4 Sec.  
 50. 00 Set the " " " cor. of Sec. 34. & 35.  
 Land level & a post good for farming. Timber Oak. Buck  
 Sugar &c.

West On a Random line on the North Bound. of Sec. 34. T. 14. S. R. 2. W.  
 40. 00 Set the temp. post for the cor. of 1/4 Sec.  
 51. 00 Set a temp. post for the cor. of Sec. 33. & 34.  
 Land rolling & good for farming. Timber the same as last mile

West On a Random line on the North Boundary of Sec. 33. T. 14. S. R. 2. W.  
 40. 00 Set a temp. post for the cor. of 1/4 Sec.  
 44. 00 To a Buck 20 links wide. Course S. W.  
 50. 00 Set a temp. post for the cor. of Sec. 32. & 33. T. 14. S. R. 2. W.  
 Land on the East 1/4 the same as last mile; on the West 1/4 level & wet.







T. N 13. A R. A 3. M. 2nd Mer. Ind.

- Buck 24 in diam. bears A 36. E. 25 links dist. Jan  
 Ash 4 " " " A 72. M. 13. " " "  
 80. 00 Get a post for the cor. of Sec. 25. & 36. from which a  
 Ash 20 in diam. bears East 2. links dist. and a  
 Buck 12. " " " A 62. M. 16. " " "  
 Land good for farming, Timber Buck. Oak. Sugar. Ash. &c.  
 North On the East Boundary of Sec. 25. T. 13. N. R. 3. M.  
 26. 50 To a Buck 10 links wide; Course E.  
 40. 00 Get a post for the cor. of 1/4 Sec. from which a  
 Elm 18 in diam. bears A 49. M. 10. links dist. and a  
 Buck 10. " " " A 56. E. 32. " " "  
 47. 50 To a Buck 10 links wide Course E.  
 74. 00 To a No 14 " " " I.C.  
 80. 00 Get a post for the cor. of Sec. 24. & 25. from which a  
 Buck 12 in diam. bears S 59. E. 21. links dist. La  
 No. 24. " " " A 20. M. 29. " " "  
 Land and Timber same as in the last mile  
 North On the East Boundary of Sec. 24. T. 13. N. R. 3. M.  
 13. 00 To a Buck 15 links wide Course  
 40. 00 Get a post for the cor. of 1/4 Sec. from which a  
 Buck 12 in diam. bears S 59. E. 4 links dist. and a  
 Sugar 10 " " " A 39. M. 40. " " "  
 To a Spring Buck. 5 links wide; Course E.  
 80. 00 Get a post for the cor. of Sec. 13. & 24. T. 13. N. R. 3. M. from  
 which a Buck 12 in diam. bears South 13 links dist. and a  
 No. 12. " " " A 14. E. 21. " " "  
 Land and Timber same as in the last mile  
 North On the East Boundary of Sec. 13. T. 13. N. R. 3. M.  
 3. 00 To a Buck 25 links wide Course E.  
 40. 00 Get a post for the cor. of 1/4 Sec. from which a

T. N 13. A R. A 3. M. 2nd Mer. Ind.

- Buck 12 in diam. bears S 37. M. 14 links dist. and a  
 Sugar 10 " " " A 24. E. 17. " " "  
 76. 50 To a Buck 15 links wide Course E.  
 80. 00 Get a post for the cor. of Sec. 12. & 13. from which a  
 Buck 10 in diam. bears S 31. M. 2 links dist. and a  
 No. 8. " " " A 31. E. 18. " " "  
 Land and Timber same as in the last mile  
 North On the East Boundary of Sec. 12. T. 13. N. R. 3. M.  
 40. 00 Get a post for the cor. of 1/4 Sec. from which a  
 Sugar 10 in diam. bears S 39. M. 6 links dist. and a  
 Buck 6. " " " A 9. E. 11. " " "  
 80. 00 Get a post for the cor. of Sec. 1. & 12. from which a  
 Buck 10 in diam. bears S 52. E. 12 links dist. and a  
 No. 18. " " " A 12. M. 20. " " "  
 Land level & good for farming. Timber Buck. Sugar. Ash.  
 Hickory &c.  
 North On the East Boundary of Sec. 1. T. 13. N. R. 3. M.  
 40. 00 Get a post for the cor. of 1/4 Sec. from which a  
 B. Ash 9 in diam. bears S 68. M. 11 links dist. and a  
 No. 18 " " " A 23. E. 21. " " "  
 78. 06 To the post cor. of Towns 14 & 15 North Ranges 2 & 3 M.  
 and set a post for the cor. from which a  
 Buck 18 in diam. bears S 68. M. 4 links dist. and a  
 No. 24 " " " North 6. " " "  
 Land and Timber same as in the last mile  
 Subdivisions v. 6. 30 E.  
 North Between Sec. 35. & 36. T. N 13. A R. A 2. M.  
 16. 80 To a Sugar 10 in diam. in the line  
 37. 08 To a No. 6 " " " " "  
 40. 00 Get a post for the cor. of 1/4 Sec. from which a



T. N. 13. N. R. A. 2. M. 2<sup>nd</sup> Mer. Ind.

- Buck 24 in. diam. bears S 59<sup>th</sup> E. 21. links dist. & a  
No. 24. " " " S 13<sup>th</sup> W. 33. " "
46. 80 To a Buck 12 in. diam. in the line
66. 14 To a No. Oak 36. " " " "
80. 00 Set a post for the cor. of Sec. 25. 26. 35. & 36. from which a  
Hickory 14 in. diam. bears S 73<sup>th</sup> W. 7<sup>th</sup> links dist. & a  
Buck 10. " " " S 58. E. 31. " "  
Land nothing & post. Timber Poplar. Buck. Ash. Oak  
and Hickory U. g. Dogwood, Sycamore, & Ash Gums.
- 
- East On a Random line between Sec. 25 & 36. T. 13. N. R. 2. M.
8. 00 Entered Swamp.
40. 00 To a temp<sup>o</sup> post for the cor. of 1/4 Sec.
80. 36 Intersect the East Bound<sup>y</sup> 10 links north of the post cor. of  
Sec. 25 & 36. Land a Brushy Swamp. Timber  
Buck. Ash. Oak. maple & some Sugar.
- 
- West On the True line between Sec. 25 & 36. T. 13. N. R. 2. M.
40. 18 To the temp<sup>o</sup> post for the cor. of 1/4 Sec. at the aver. dist. in the  
True line from which an  
Elm 27 in. diam. bears S 45<sup>th</sup> W. 22. links dist. and a  
Swamp Ash 7 in. diam. bears N 43<sup>th</sup> E. 19. " "
80. 36 To the post cor. of Sec. 25. 26. 35. & 36.
- 
- North Between Sec. 25 & 36. T. 13. N. R. 2. M.
9. 24 To a Hickory 4 in. diam. in the line
30. 00 Entered Swamp.
36. 50 To a Gyn 12 in. diam. in the line
40. 00 Set a post for the cor. of 1/4 Sec. from which an  
No. Oak 12 in. diam. bears S 77<sup>th</sup> E. 12. links dist. and a  
No. 14. " " " S 72<sup>th</sup> W. 12. " "
43. 30 To a Burr. Oak 30 in. diam. in the line
68. 00 To a No. " 16. " " " " "

T. N. 13. N. R. A. 2. M. 2<sup>nd</sup> Mer. Ind.

80. 00 Set a post for the cor. of Sec. 23. 24. 25. & 26. from which a  
Maple 9 in. diam. bears S 37. E. 12. links dist. and a  
No. 10. " " " S 88<sup>th</sup> W. 9. " "
- Land in this mile wet & Swampy. Timber Maple. Burr. Oak  
Swamp Ash. Gum Gum & Elm.
- 
- East On a Random line between Sec. 24 & 25. T. 13. N. R. 2. M.
40. 00 Set the temp<sup>o</sup> post for the cor. of 1/4 Sec.
79. 98 Intersect the East Boundary 2 links north of the post cor.  
of Sec. 24 & 25. Land in this line is wet & Swampy.  
Timber. Buck. Sycamore, Swamp Ash, Gum Gum & Maple.
- 
- West On the True line between Sec. 24 & 25. T. 13. N. R. 2. M.
39. 99 To the temp<sup>o</sup> post at the aver. dist. in the True line for the cor.  
of 1/4 Sec. from which a  
Buck 12 in. diam. bears N 69<sup>th</sup> W. 22. links dist. & a  
Gyn 8. " " " S 17<sup>th</sup> W. 11. " "
79. 88 To the post cor. of Sec. 23. 24. 25. & 26.
- 
- North Between Sec. 23 & 24. T. 13. N. R. 3. M.
4. 50 To a Gray Ash 16 in. diam. in the line
33. 05 To an Elm 15. " " " " "
40. 00 Set a post for the cor. of 1/4 Sec. from which a  
Maple 15 in. diam. bears S 53. E. 32. links dist. and a  
Swamp Ash 5 in. " " S 40<sup>th</sup> W. 33. " "
46. 80 To an Elm 18 in. diam. in the line
68. 50 Left Swamp.
80. 00 Set a post for the cor. of Sec. 13. 14. 23. & 24. from which a  
Buck 22 in. diam. bears S 34<sup>th</sup> W. 11. links dist. & a  
No. 10. " " " S 41. E. 30. " "
68. chains and 50. links on entire Swampy Land. The  
remainder of this line thin soil. Timber. Swamp Ash.  
Gum, Maple, Buck. Ash. Elm. &c.



## T. N. 13. S. R. 2. T. 2nd Mer. Ind.

- Buck 24 in. diam. bears S 59 1/2 E 21 links dist. & a  
 No. 24. " " S 13 1/2 W 33. " "
46. 80 To a Buck 12 in. diam. in the line
66. 14 To a No. 36. " " " "
80. 00 Set a post for the cor. of Sec. 25, 26, 35 & 36 from which a  
 Hickory 14 in. diam. bears S 73 W 71 links dist. & a  
 Buck 10. " " S 58 E 31. " "  
 Land rolling & open. Timber Poplar, Buck Ash Oak  
 and Hickory N.g. Sycamore, Linnseed, & Ash bolls.
- 
- East On a Random line between Sec. 25 & 36. T. 13. S. R. 2. M.
8. 00 Entered Swamp.
40. 00 Set a temp. post for the cor. of 1/4 Sec.
80. 36 Intersect the East Bound. 10 links North of the post cor. of  
 Sec. 25 & 36. Land a Brushy Swamp. Timber  
 Buck Ash Oak Maple & some Sugar.
- 
- West On the True line between Sec. 25 & 36. T. 13. S. R. 2. M.
40. 18 Set the temp. post for the cor. of 1/4 Sec. at the aver. dist. in the  
 True line from which an  
 Elm 27 in. diam. bears S 45 W 22 links dist. and a  
 Swamp Ash 7 in. diam. bears S 43 1/2 E 19. " "
80. 36 To the post cor. of Sec. 25, 26, 35 & 36.
- 
- North Between Sec. 25 & 36. T. 13. S. R. 2. M.
9. 24 To a Hickory 4 in. diam. in the line
30. 00 Entered Swamp.
36. 50 To a Lyma 12 in. diam. in the line
40. 00 Set a post for the cor. of 1/4 Sec. from which an  
 Co. Oak 12 in. diam. bears S 77 1/2 E 12 links dist. and a  
 " No. 14. " " S 72 W 12. " "
43. 30 To a Burr Oak 30 in. diam. in the line
68. 00 To a No. " 16. " " " "

## T. N. 13. S. R. 2. T. 2nd Mer. Ind.

80. 00 Set a post for the cor. of Sec. 23, 24, 25 & 26 from which a  
 Maple 9 in. diam. bears S 97 E 12 links dist. and a  
 No. 10. " " S 88 W 9. " "
- Land in this mile wet & Swampy. Timber Maple, Burr Oak  
 Swamp Ash. Sweet Gum & Elm.
- 
- East On a Random line between Sec. 24 & 25. T. 13. S. R. 2. M.
40. 00 Set the temp. post for the cor. of 1/4 Sec.
79. 98 Intersect the East Boundary 2 links north of the post cor.  
 of Sec. 24 & 25. Land in this line is wet & Swampy.  
 Timber. Buck Sycamore, Swamp Ash, Sweet Gum & Maple.
- 
- West On the True line between Sec. 24 & 25. T. 13. S. R. 2. M.
39. 99 Set the temp. post at the aver. dist. on the True line, for the cor.  
 of 1/4 Sec. from which a  
 Buck 12 in. diam. bears S 69 W 22 links dist. & a  
 Lyma 8. " " S 17 W 11. " "
79. 88 To the post cor. of Sec. 23, 24, 25 & 26.
- 
- North Between Sec. 23 & 24. T. 13. S. R. 3. M.
4. 50 To a Gray Ash 16 in. diam. in the line
33. 05 To an Elm 15. " " " "
40. 00 Set a post for the cor. of 1/4 Sec. from which a  
 Maple 15 in. diam. bears S 53 E 32 links dist. and a  
 Swamp Ash 5 in. " S 40 W 33. " "
46. 80 To an Elm 10 in. diam. in the line
63. 50 Left Swamp.
80. 00 Set a post for the cor. of Sec. 13, 14, 23 & 24 from which a  
 Buck 22 in. diam. bears S 34 W 11 links dist. & a  
 No. 10. " " S 41 E 30. " "  
 68 chains and 50 links on entire Swampy Land. The  
 remainder of this line thin soil. Timber. Swamp Ash  
 Gum, Maple, Buck Ash, Elm, &c.



## T. N 13. A. N. N 2. N. 2nd Mer. Ind.

East On a Random line between Sec. 13. & 24. T. 13. N. R. 2. W.  
 40. 00 For the temp. post for the 1/4 Sec.  
 80. 14 Intersect the East Boundary 25 links North of the post  
 cor. of Sec. 13. & 24. Land post. Timber Buck  
 Lycamore, Ash. & Poplar. Sept 27<sup>th</sup> 1819.

West On the True line between Sec. 13. & 24. T. 13. N. R. 2. W.  
 40. 07 For the temp. post for the cor. of 1/4 Sec. at the aver. dist. on  
 the True line from which a  
 Elm 19. in diam. bears S. 33. 1/2 E. 35. links dist. La.  
 Buck 11. " " " N. 29. 1/2 W. 31. " "  
 80. 14 To the post for the cor. of Sec. 13. 14. 23. & 24.

North Between Sec. 13. & 24. T. 13. N. R. 2. W.  
 5. 57 To a Buck 7. in diam. in the line  
 40. 00 For a post for the cor. of 1/4 Sec. from which a  
 Elm 36. in diam. bears N. 67. 1/2 E. 11. links dist. La  
 Buck 24. " " " S. 3. 00 W. 21. " "  
 42. 50 To a Buck 13. in diam. in the line  
 76. 00 To a Sec 11. " " " " "  
 80. 00 For a post for the cor. of Sec. 11. 12. 13. & 14 from which a  
 Buck 18. in diam. bears N. 83. E. 21. links dist. La.  
 Sec. 6. " " " S. 36. W. 6. " "  
 Land level and rich. On the 1<sup>st</sup> 1/2 rather wet. Timber. Oak  
 Ash. Poplar. Buck. Walnut & Hickory. Big Spruce &c.

East On a Random line between Sec. 12. & 13. T. 13. N. R. 2. W.  
 40. 00 For a temp. post for the cor. of 1/4 Sec.  
 79. 67 Intersect the East Boundary 75 links North of the post  
 cor. of Sec. 12. & 13. Land level & Soil rich. Timber Buck  
 Sugar. Ash. Poplar. Elm. Hickory & Oak.

West On the True line between Sec. 12. & 13. T. 13. N. R. 2. W.

## T. N 13. A. N. N 2. N. 2nd Mer. Ind.

39. 83 1/2 For the temp. post for the cor. of 1/4 Sec. at the aver. dist. on  
 the True line from which a  
 Buck 15. in diam. bears N. 34. E. 15. links dist. La  
 Gray Ash 22. " " " N. 26. W. 26. " "  
 79. 67 To the post cor. of Sec. 11. 12. 13. & 14.

North Between Sec. 11. & 12. T. 13. N. R. 2. W.  
 22. 20 To a Buck 24. in diam. in the line  
 34. 50 To a Walnut 16. " " " " "  
 40. 01 For a post for the cor. of 1/4 Sec. from which a  
 Buck 9. in diam. from which a  
 Buck 11. in diam. bears N. 28. W. 17. links dist. La  
 Sec. 12. " " " S. 28. E. 36. " "  
 43. 50 To an Elm 36. in diam. in the line  
 73. 36 To a Buck 22. " " " " "  
 80. 00 For a post for the cor. of Sec. 1. 2. 11. & 12. from which a  
 Buck 11. in diam. bears S. 77. W. 14. links dist. La  
 Lymc " " " S. 88. E. 44. " "  
 Land level & rich. Timber Ash. Oak. Buck. Sugar.  
 & Poplar.

East On a Random line between Sec. 1 & 12. T. 13. N. R. 2. W.  
 40. 00 For the temp. post for the cor. of 1/4 Sec.  
 79. 38 Intersect the East Boundary 67 links North of the post  
 cor. of Sec. 1 & 12. Land level. & the 1<sup>st</sup> 1/2 rich. 2nd  
 1/2 Thin; Timber Ash. Oak. Walnut Lymc. Sugar. & Buck.

West On the True line between Sec. 1 & 12. T. 13. N. R. 2. W.  
 39. 69 For the temp. post at the aver. dist. on the True line  
 for the cor. of 1/4 Sec. from which a  
 Buck 14. in diam. bears S. 53. E. 14. links dist. La  
 Sec. 15. " " " N. 47. E. 26. " "  
 79. 38 To the post cor. of Sec. 1. 2. 11. & 12. T. 13. N. R. 2. W.



T. N. 13. A. R. No. 2. M. 2nd Mer. Ind.

- North Between Sec. 1 & 2. T. 13. N. R. No. 2. M.
3. 00 To a Hickory 18 in diam. in the line
3. 50 To a Bottom or flat land.
25. 00 To dry land Sept. 28. 1819.
35. 87 To a Buck 14 in diam. in the line
40. 00 Set a post for the cor. of  $\frac{1}{4}$  Sec. from which a  
Hickory 12 in diam. bears S. 3. W. 26. links dist. La  
Sec. 22. " " " N. 31. W. 20 " "
48. 00 To a Buck 22 in diam. in the line
68. 55 To a M. 12. " " " "
77. 50 Intersect the North Boundary 77 links East of the  
post cor. of Sec. 35 & 36. T. 14. N. R. 2. M. and set a  
post for the cor. of Sec. 1 & 2. from which a  
Hickory 13 in diam. bears S. 49. W. 7. links dist. La  
Gunn 8. " " " N. 10. E. 29. " "
- Land level & brushy with Spice Woods, & Water Buck  
Land in line to be met. Timber. Black & Grey Ash  
Hickory, & Buck, Walnut, Gunn, Gycamore, & Swamp Ash

- North Between Sec. 34 & 35 T. 13. N. R. 2. M.
12. 14 To a Poplar 36 in diam. in the line
15. 75 To a Spring Branch, Course E.
21. 25 To a M. " " E
32. 92 To a Sugar 18 in diam. in the line
40. 00 Set a post for the cor. of  $\frac{1}{4}$  Sec. from which a  
Poplar 48 in diam. bears N. 20. W. 32. links dist. La  
Buck 11. " " " S. 20. W. E. 7. " "
44. 87 To a Sugar 12 in diam. in the line
77. 93 To a M. 12 " " " "
80. 00 Set a post for the cor. of Sec. 26, 27, 34 & 35. from which a  
Sugar 7 in diam. bears N. 85. W. 20. links dist. La  
Sec. 12. " " " S. 44. E. 15. " "
- Land level & Soil rich Timber. Buck, Sugar Ash.

T. N. 13. A. R. No. 2. M. 2nd Mer. Ind.

Poplar &amp; Walnut. Undergrowth Spice &amp;c.

- East On a Random line between Sec. 26 & 35. T. 13. N. R. 2. M.
33. 00 To a Bush 20 links wide, Course North.
40. 00 Set a temp. post for the cor. of  $\frac{1}{4}$  Sec.
81. 08 Intersect the S. & E. line 62 links South of the post cor.  
of Sec. 25, 26, 35 & 36. Land level & Soil rich.  
Timber. Ash, Buck, & Sugar. Poplar, Hickory & Oak.
- West On the True line between Sec. 26 & 35. T. 13. N. R. 2. M.
40. 34 Set the post for the cor. of  $\frac{1}{4}$  Sec. at the most dist. on the true  
line from which a Hickory 11 in diam. bears S. 3. E. 19. links dist.  
and a Buck 20. " " " N. 81. W. 18. " "
81. 08 To the post cor. of Sec. 26, 27, 34 & 35.

- North Between Sec. 36 & 37. T. 13. N. R. 2. M.
10. 31 To a Buck 16 in diam. in the line
28. 04 To a Hard Oak 32 in " " " "
45. 00 Set a post for the cor. of  $\frac{1}{4}$  Sec. from which a  
Buck 27 in diam. bears N. 37. E. 32. links dist. and a  
Sec. 19. " " " S. 37. W. 36. " "
42. 35 To an Ash 15 in diam. in the line
80. 00 Set a post for the cor. of Sec. 22, 23, 36 & 37. from which  
a Hickory 24 in diam. bears S. 44. W. 16 links dist. La  
a Walnut 12. " " " N. 81. E. 30. " "
- Land level & rich; Timber. Buck, Sugar, Ash, Poplar  
and Walnut. No but little and that Spice woods.

- East On a Random line between Sec. 23 & 26. T. 13. N. R. 2. M.
40. 00 Set the temp. post for the cor. of  $\frac{1}{4}$  Sec.
41. 00 To a Bush 20 links wide, Course S. & E.
80. 55 Intersect the S. & E. line 22 links South of the post cor. of  
Sec. 23, 24, 25 & 26. T. 13. N. R. 2. M.



T. N 13. A. R. N 2. W. 2<sup>nd</sup> Mer. Ind.

This line is apparently all wet Land in a wet season & must be nearly covered with water. Timber Swamp Ash, Buck, Sugar Oak, Ash, & Maple. W. g. Swamp Millen. Spruce

West On the True line between Sec 26 & 23. T 13. A. R. N 2. W.  
40. 27<sup>th</sup> Set the temp<sup>r</sup> post for the cor. of 1/4 Sec. as the area dist. on the true line from which a Sept. 29. 1879.  
Buck 12 in. diam. bears S. 26. W. 40. links dist. and a  
Sec. 13. " " " S. 20. W. 22. " "

North Between Sec 22 & 23. T 13. A. R. N 2. W.  
Cor in wet low land not in a wet season.

11. 75 To an Ash 24 in diam. in the line  
15. 50 Entered Swampy Land.  
36. 43 To a Maple 6 in diam. in the line  
40. 00 Set a post for the cor. of 1/4 Sec. from which a  
Maple 24 in diam. bears S. 48. E. 16. links dist. and a  
Swamp Ash 22. " " S. 34. W. 26. " "  
49. 85 To a Maple 7 in. diam. in the line  
72. 18 To an Elm 14. " " " "  
80. 00 Set a post for the cor. of Sec 14 15. 22 & 23. from which  
a Maple 9 in diam. bears S. 62. E. 10. links dist. & a  
Sec. 5. " " " S. 3. W. 7. " "  
Land at present not very wet. but evident marks of  
Swamp complete. Bearing from our house. N. E. W. Co.  
Timber. Maple. Swamp Ash. Elm &c. Undergrowth.  
Swamp Millen & very thick

East On a Random line between Sec 14 & 23. T 13. A. R. N 2. W.  
40. 00 Set the temp<sup>r</sup> post for the cor. of 1/4 Sec.  
45. 00 Left Swamp Land. Though the land is still of a wet appearance.  
60. 00 Entered dry Land.  
80. 21<sup>st</sup> Intersect the N. & South line 3 links South of the post cor.

T. N 13. A. R. N 2. W. 2<sup>nd</sup> Mer. Ind.

of Sec 13. 14. 23 & 24. Land on the 1<sup>st</sup> 1/2 mile all  
Swamp. on the last 1/2 some Swamp. some wet & some dry  
Timber. Maple. Swamp. Ash. Buck. Ash. Elm & Oak.  
Undergrowth in the first 1/2 Swamp Millen. 2<sup>nd</sup> 1/2 Hoag & Spruce

West On the True line between Sec 14 & 23. T 13. A. R. N 2. W.  
40. 10<sup>th</sup> Set the temp<sup>r</sup> post for the cor. of 1/4 Sec. as the area dist. on the True line from which a  
Maple 30 in diam. bears S. 80. W. 20. links dist. and a  
Sec. 15. " " " S. 78. E. 22. " "  
80. 21<sup>st</sup> To the post cor. of Sec 14. 15. 22 & 23.

North Between Sec 14 & 15. T 13. A. R. N 2. W.

12. 64 To a Burr Oak 44 in diam. in the line  
35. 50 To a Buck 18 in diam. in the line  
40. 00 Set a post for the cor. of 1/4 Sec. from which a  
Buck 11 in diam. bears S. 84. E. 21. links dist. and a  
Sec. 12. " " " S. 32. E. 16. " "  
This cor. is on dry Land.  
45. 50 To a Buck 18 in diam. in the line  
69. 50 To a Sec. 16. " " " "  
80. 00 Set a post for the cor. of Sec 12. 11. 14 & 15. from which a  
Buck 13 in diam. bears S. 31. E. 35. links dist. & a  
Sec. 14. " " " S. 11. E. 55. " "  
Land on the first 1/2 mile exhibits appearances of wet.  
and the last 1/2 of dry Land. Timber Maple. Buck  
Sugar. Walnut. Elm. Spruce. Ash &c.

East On a Random line between Sec 11 & 14. T 13. A. R. N 2. W.  
40. 00 Set a temp<sup>r</sup> post for the cor. of 1/4 Sec.  
50. 04 Intersect the N. & S. line 12 links South of the post cor. of  
Sec 11. 12. 13. & 14. Land all level and dry. Timber Ash. Buck  
Poplar. Sugar. Oak. & Spruce. W. g. Spruce & Ash gaules.



T. N 13. A. R. N 2. W. 2nd Mer. Ind.

This line is apparently all wet land in a wet season & must be nearly covered with water. Timber. Swamp Ash, Buck, Sugar Oak, Ash, & Maple. Ugly Swamp Willows, Spruce

West On the true line between Sec 26 & 23. T. 13. N. R. 2. W.  
40. 27 1/2 Set the temp. post for the cen. of 1/4 Sec. as the area dist. on the true line from which a Sept. 29. 1819.  
Buck 12 in diam. bears S. 26. W. 40. links dist. and a  
Sec. 13. " " " S. 20. W. 22. " "

North Between Sec 22 & 23. T. 13. N. R. 2. W.  
Sec in wet low land wet in a wet season.

11. 75 To an Ash 24 in diam. in the line  
15. 00 Entered Swampy Land.  
36. 43 To a Maple 6 in diam. in the line  
40. 00 Set a post for the cen. of 1/4 Sec. from which a  
Maple 24 in diam. bears S. 48. E. 16. links dist. and a  
Swamp Ash 22. " " " S. 34. W. 26. " "  
49. 85 To a Maple 7 in diam. in the line  
72. 18 To an Elm 14 " " " " "  
80. 00 Set a post for the cen. of Sec 14, 15, 22 & 23. from which a  
Maple 9 in diam. bears S. 62. E. 10. links dist. & a  
Sec. 5. " " " S. 3. W. 7. " "  
Land at present not very wet. but recent marks of  
Swamp complete. Bearing from our house. S. 6. W. 60.  
Timber. Maple. Swamp Ash. Elm &c. Undergrowth  
Swamp Willows & very thick.

East On a Random line between Sec 14 & 23. T. 13. N. R. 2. W.  
40. 00 Set the temp. post for the cen. of 1/4 Sec.  
45. 00 Left Swamp Land. Thence the land is still of a wet appearance  
60. 00 Entered dry Land.  
80. 21 1/2 Intersect the A. & South line 3 links South of the post cen.

T. N 13. A. R. N 2. W. 2nd Mer. Ind.

of Sec 13, 14, 23 & 24. Land on the 1st 1/2 mile all  
Swamp. on the last 1/2 some Swamp. some wet & some dry  
Timber. Maple. Swamp. Ash. Buck. Ash. Elm & Oak.  
Undergrowth in the first 1/2 Swamp Willows. Spruce. Horz. & Spruce

West On the true line between Sec 14 & 23. T. 13. N. R. 2. W.  
40. 10 1/2 Set the temp. post for the cen. of 1/4 Sec. as the area dist. on the true line from which a  
Maple 30 in diam. bears S. 80. W. 20. links dist. and a  
Sec. 15. " " " S. 78. E. 22. " "  
80. 21 1/2 To the post cen. of Sec 14, 15, 22 & 23.

North Between Sec 14 & 15. T. 13. N. R. 2. W.

12. 64 To a Burn Oak 44 in diam. in the line  
35. 50 To a Buck 18 in diam. in the line  
40. 00 Set a post for the cen. of 1/4 Sec. from which a  
Buck 11 in diam. bears S. 8. W. E. 21. links dist. and a  
Sec. 12. " " " S. 32. E. 11. " "  
This cen. is in dry Land

45. 50 To a Buck 18 in diam. in the line  
69. 50 To a Sec. 16. " " " " "  
80. 00 Set a post for the cen. of Sec 12, 11, 14 & 15. from which a  
Buck 13 in diam. bears S. 31. E. 35. links dist. & a  
Sec. 14. " " " S. 11. E. 55. " "  
Land on the first 1/2 mile exhibits appearances of wet.  
and the last 1/2 of dry Land Timber Maple. Buck  
Sugar. Walnut. Elm. Spruce. Ash &c.

East On a Random line between Sec 11 & 14. T. 13. N. R. 2. W.  
40. 00 Set a temp. post for the cen. of 1/4 Sec.  
50. 04 Intersect the A. & S. line 12 links South of the post cen. of  
Sec 11, 12, 13, & 14. Land all level and dry. Timber. Ash. Buck.  
Poplar. Sugar. Oak. Spruce. Elm. Spruce & Ash grows.



## T. N 13. A. B. N 2. W. 2nd Mer. Ind.

- West On the True line between Sec. 11 & 14. T. 13. N. R. 2. W.
40. 02 Set the temp. post for the cor. of 1/4 Sec. as the aver. dist. in the True line from which a  
Lynn 30. in diam. bears S. 30. E. 13. links dist. La.  
Buck 24 " " " N 49. W. 32. " "
80. 04 To the post cor. of Sec. 10. 11. 14 & 15. Sep 30<sup>th</sup> 1819.

- North Between Sec. 10 & 11 T. N 13. A. B. N 2. W.
2. 10 To a Grey Ash 24. in diam. in the line
32. 50 Entered Bottom Land
39. 10 To a Hickory 10. in diam. in the line
40. 00 Set a post for the cor. of 1/4 Sec. from which a  
W. Locust 23. in diam. bears N. 9. E. 15. links dist. La.  
Plum tree " " " S. 99. E. 19. " "
44. 00 To the Bed of a big creek, some holes of standing water  
supposed to be an outlet of the Swamp. House W.
42. 00 To high & dry Land.
50. 00 To a Sugar 24. in diam. in the line
68. 00 To a Buck 12. " " " "
80. 10 Set a post for the cor. of Sec. 2. 3. 10. & 11. from which a  
Buck 8. in diam. bears S. 26. E. 9. links dist. La.  
Hick 9. " " " N 56. W. 10. " "  
Land on the 1<sup>st</sup> level in the 2<sup>nd</sup> thin. Timber.  
Ash. Oak. Poplar. Buck. Sugar. Hickory & some Heavy  
Locust & Plum trees.

- East On a Random line between Sec. 2 & 11. T. 13. A. B. N 2. W.
20. 00 Entered low wet Bottom Land.
40. 00 Set the temp. post for the cor. of 1/4 Sec.
44. 00 To a large Buck. House North.
80. 00 Intersect the N. E. line 11 1/2 links South of the post and Sec.  
1. 2. 11. & 12. Land generally rich but apparently too wet in common  
seasons of the year. Timber. Oak. Ash. Buck. Poplar. Sugar. Maple & Walnut.

## T. N 13. A. B. N 3. W. 2nd Mer. Ind.

- West On the True line between Sec. 2 & 11. T. 13. A. B. N 3. W.
40. 14 Set the post for the cor. of 1/4 Sec. as the aver. dist. in the  
True line. from which a  
Burr Oak 15. in diam. bears S. 55. E. 20. links dist. La.  
Elm 8. " " " N. 34. E. 18. " "
80. 28 To the post cor. of Sec. 2. 3. 10 & 11.

- North Between Sec. 2 & 3. T. 13. A. B. N 3. W.
6. 50 To a Lynn 17. in diam. in the line
36. 00 To an Elm 12. " " " "
40. 00 Set a post for the cor. of 1/4 Sec. from which a  
Buck 11. in diam. bears S. 77. E. 7. links dist. La.  
Grey Ash 19. " " " N 67. W. 32. " "
48. 18 To a W. Oak 40. in diam. in the line
71. 14 To a Buck 14. " " " "
78. 50 Intersect the North Boundary 70 1/2 links East of the  
post cor. of Sec. 34 & 35. T. 14. A. B. N 2. W. I set a  
post for the cor. of Sec. 2. & 3. from which a  
Buck 13. in diam. bears S. 68. W. 11. links dist. La.  
Do. 12. " " " N. 88 1/2 E. 13. " "  
Land on the 1<sup>st</sup> level & rich. in the 2<sup>nd</sup> thin  
Timber. Buck. Oak. Ash. Lynn. Sugar. & Poplar.

- North Between Sec. 33. & 34. T. N 13. A. B. N 2. W.
8. 00 To a Buck 12. in diam. in the line Oct. 1<sup>st</sup> 1819.
25. 94 To a Do. 12. " " " "
40. 00 Set a post for the cor. of 1/4 Sec. from which a  
Buck 14 in diam. bears S. 53. E. 23. links dist. La.  
Hickory 15. " " " N 16. W. 33. " "
55. 79 To a Buck 18. in diam. in the line
80. 00 Set a post for the cor. of Sec. 27. 28. 33. & 34. from which  
a Buck 12. in diam. bears N 88. E. 35. links dist.  
La Do. 10. " " " N 22. W. 30. " "



T. N° 13. A. B. N° 2. W. 2nd Mer. Ind.

Sound Ind. rate. Timber Buck. Poplar. B. Ash. &amp; Poplar.

East On a Random line between Sec. 27 & 34. T. 13. N. R. 2. W.  
 40. 00 Set the temp. post for the cor. of 1/4 Sec.  
 79. 20 Intersect the A & I line 43. links north of the post  
 cor. of Sec. 26. 27. 34 & 35. Sound level & 2nd rate  
 Timber Buck. Poplar. Sugar & W. Oak.

West On the True line between Sec. 27 & 34. T. 13. N. R. 2. W.  
 39. 60 Set the temp. post for the cor. of 1/4 Sec. at the aver.  
 dist. on the true line from which a  
 Buck 16. in diam. bears N 40. W. 9. links dist. & a  
 Sec. 7. " " " S. 4. E. 27. " "  
 79. 20 To the post cor. of Sec. 27. 28. 33. & 34.

North Between Sec. 27. & 28. T. 13. N. R. 2. W.  
 13. 00 To a Buck 14. in diam. in the line.  
 40. 00 Set a post for the cor. of 1/4 Sec. from which a  
 Buck 12. in diam. bears N 67. W. 3 1/2 links dist. & a  
 Sec. 8. " " " N 40. E. 24. " "  
 80. 00 Set a post for the cor. of Sec. 21. 22. 27. & 28 from which  
 a Buck 16. in diam. bears S 10. W. 12. links dist. & a  
 Sec. 20. " " " N. 52 1/2 E. 13 1/2 " "

West On a Random line between Sec. 22 & 27. T. 13. N. R. 2. W.  
 40. 00 Set the temp. post for the cor. of 1/4 Sec.  
 80. 00 Intersect the A & I line 23. links north of the post  
 cor. of Sec. 22. 23. 26. & 27.  
 Sound level & 2nd rate; Timber Buck. Poplar. Hickory  
 and Black Ash.

West On the True line between Sec. 22. & 27. T. 13. N. R. 2. W.  
 40. 00 Set the temp. post for the cor. of 1/4 Sec. at the aver. dist.

T. N° 13. A. B. N° 2. W. 2nd Mer. Ind.

on the true line from which a  
 Buck 12. in diam. bears N 43. E. 26. links dist. & a

Sec. 14. " " " S. 77. W. 24. " "  
 80. 00 To the post cor. of Sec. 21. 22. 27. & 28. Sept. 30. 1889.

North Between Sec. 21. & 22. T. 13. N. R. 2. W.  
 2. 73 1/2 To a Hickory 18. in diam. in the line.  
 27. 50 Entered Swamp.  
 40. 00 Set a post for the cor. of 1/4 Sec. from which a  
 Ash 7. in diam. bears S 40. E. 45. links dist. and a  
 Ash 6. " " " S. 53 1/2 E. 43. " "  
 55. 00 Left the Swamp  
 62. 15 To an Elm 18. in diam. in the line  
 74. 10 To a Buck 15. " " " " "  
 80. 00 Set a post for the cor. of Sec. 15. 16. 21. & 22. from which a  
 W. Oak 2. in diam. bears N 64. E. 3. links dist. and a  
 W. Buck 4. " " " N 42. W. 14. " "  
 Sound level & rich; Timber Buck. Sycamore Maple,  
 Poplar. Hickory. and B. Ash.

East On a Random line between Sec. 15. & 22. T. 13. N. R. 2. W.  
 40. 00 Set the temp. post for the cor. of 1/4 Sec.  
 79. 95 Intersect the A & I line 42. links north of the post  
 cor. of Sec. 14. 15. 22 & 23. Sound swampy & rich.  
 Timber Buck. Red Elm. Sycamore B. Ash. & Poplar.

West On the True line between Sec. 15 & 22. T. 13. N. R. 2. W.  
 39. 97 Set the temp. post for the cor. of 1/4 Sec. at the aver. dist. on  
 the true line from which a  
 Lyrus 4. in diam. bears N 52. E. 4 1/2 links dist. & a  
 Elm 5. " " " S 82. W. 18. " "  
 79. 75 To the post cor. of Sec. 15. 16. 21. & 22.



## T. N 13. A. B. N 2. W. 2nd Mer. Ind.

North Between Sec 15 & 16. T. N 13. A. B. N 2. W.  
 28. 57 1/2 To a Buck 18 in diam. in the line.  
 35. 59 To a Buck 18. " " " "  
 40. 00 Set a post for the cor. of 1/4 Sec. from which a  
 Buck 20 in diam. bears N 53. W. 11. links dist. and a  
 Sp. 13. " " " N 35. E. 35. " "  
 69. 12 To a Buck 23 in diam. in the line  
 79. 05 To a Sp. 14 " " " "  
 80. 00 Set a post for the cor. of Sec 9. 10. 15 & 16. from which a  
 Buck 13 in diam. bears N 57. E. 10. links dist. and a  
 B. Gum 20. " " " N 38. W. 19. " "  
 Land level & 2nd rate. Timber Buck. B. Ash. B.  
 Oak. & White Oak.

East On a Random line between Sec 10 & 15. T. N 13. A. B. N 2. W.  
 40. 00 Set the temp. post for the cor. of 1/4 Sec.  
 79. 75 Intersect the N & S line 61 links South of the post cor.  
 of Sec 10 & 15. Land level & 2nd rate. Timber  
 Buck. B. Ash. Poplar. Walnut. B. Oak. Oct. 17. 1889.

West On the True line between Sec 10 & 15. T. N 13. A. B. N 2. W.  
 39. 87 1/2 Set the temp. post for the cor. of 1/4 Sec. at the aver. dist. on  
 the true line, from which a  
 Buck 12 in diam. bears S. 76. W. 25 links dist. and a  
 Sp. 6. " " " S. 75. W. 26. " "  
 79. 75 To the post cor. of Sec 9. 10. 15 & 16.

North Between Sec 9 & 10. T. N 13. A. B. N 2. W.  
 15. 00 To a W. Oak 20 in diam. in the line.  
 22. 50 To a Buck 30 links dist. from the  
 40. 00 Set a post for the cor. of 1/4 Sec. from which a  
 Buck 12 in diam. bears S 65. E. 13. links dist. and a  
 Sp. 14. " " " N 53. E. 18. " "

## T. N 13. A. B. N 2. W. 2nd Mer. Ind.

75. 00 To a W. Oak 24 in diam. in the line.  
 81. 00 Set a post for the cor. of Sec 3. 4. 9 & 10. from which a  
 W. Oak 30 in diam. bears S. 79. W. 26 links dist. and a  
 Buck 20. " " " N 15. E. 29. " "  
 Land Ind. rate.

East On a Random line between Sec 3 & 10. T. N 13. A. B. N 2. W.  
 40. 00 Set the temp. post for the cor. of 1/4 Sec.  
 80. 00 Intersect the N & S line 61 links South of the post  
 cor. of Sec 2. 3. 10 & 11. Land level and 2nd rate  
 Timber. Buck. Poplar. W. Oak. B. Ash. & Red Oak.

West On the True line between Sec 3 & 10. T. N 13. A. B. N 2. W.  
 40. 00 Set the post for the cor. of 1/4 Sec. on the true line from which a  
 Sugar 12 in diam. bears S 65. W. 12 links dist. and a  
 Buck 30. " " " S. 4. W. 8. " "  
 80. 71 To the post cor. of Sec 3. 4. 9 & 10.

North Between Sec 3 & 4. T. N 13. A. B. N 2. W.  
 16. 81 To a Buck 18 in diam. in the line  
 30. 00 To a Sp. 20. " " " "  
 40. 00 Set a post for the cor. of 1/4 Sec. from which a  
 Sugar 14 in diam. bears N 83. W. 13 links dist. and a  
 Buck 20. " " " N 64. E. 19. " "  
 44. 50 To a Buck 12 in diam. in the line  
 71. 10 Intersect the North Boundary 76 links East of the  
 post cor. of Sec 33 & 34. T. N 14. A. B. N 2. W. and set  
 a post for the cor. of Sec 3 & 4. from which a  
 Sugar in diam. bears North 67. W. 11 links dist. and a  
 Buck 14. " " " S. 76. W. 48. " "

North Between Sec 32 & 33. T. N 13. A. B. N 2. W.  
 3. 70 To a Buck 17 in diam. in the line



## T. N. 13. N. W. N. 2. W. 2nd Mer. Ind.

28. 90 To a Buck 12 in diam. in the line  
 40 00 Set a post for the cor. of  $\frac{1}{4}$  Sec. from which a  
 Hickory 22 in diam. bears N 17. E. 18. links dist. La  
 Buck 21 " " " S. 17. E. 18. " "  
 53. 50 To Bottom Land  
 54 00 To an Ash 18 in diam. in the line  
 69. 00 To a Buck 12. " " " "  
 80. 00 Set a post cor. of Sec. 28. 29. 32. & 33. from which a  
 Hickory 10 in diam. bears N 16. W. 15. links dist. La  
 Buck 12. " " " S. 53. W. 20. " "  
 Land thin moderate & very brushy. Timber. W. Oak.  
 S. Oak. Ash. Buck. Poplar. Sycamore & Hickory  
 Undergrowth small Ash & Oak grubbs Sycamore & Spice

East On a Random line between Sec. 28. & 33. T. 13. N. R. 2. W.  
 40 00 Set a temp. post for the cor. of  $\frac{1}{4}$  Sec.  
 51. 16 Intersect the N. & S. line 2 links north of the post  
 cor. of Sec. 27. 28. 33. & 34. Land level thin & poor  
 Timber. Buck. W. & S. Oak. Hickory & Poplar. W. g.  
 thick with Buck. Ash & Sycamore grubbs & Briars

West On the true line between Sec. 28 & 33. T. 13. N. R. 2. W.  
 40. 58 Set the post for the cor. of  $\frac{1}{4}$  Sec. at the over. dist. on  
 the true line from which a  
 Buck 15 in diam. bears S. 50. W. 23. links dist. La  
 No. 18. " " " S. 60. E. 32. " "  
 51. 16 To the post cor. of Sec. 28. 29. 32. & 33.

North Between Sec. 28. & 29. T. N. 13. N. W. N. 2. W.  
 8. 22 To a Buck 12 in diam. in the line  
 33. 20 To a No. 8. " " " "  
 40. 00 Set a post for the cor. of  $\frac{1}{4}$  Sec. from which a  
 Buck 18 in diam. bears N 55. E. 15. links dist. La.

## T. N. 13. N. W. N. 2. W. 2nd Mer. Ind.

- Buck 6 in diam. bears N 77. W. 22. links dist.  
 46. 32 To a Buck 24 in diam. in the line  
 46. 82 Ordered Buck Bottoms  
 62. 00 To a Brook or standing pond of water & which appears  
 to have a S. W. course.  
 73. 38 To a Swamp Ash 13 in diam. in the line  
 80. 00 Set a post for the cor. of Sec. 20. 21. 28. & 29. from which  
 a Grey Ash 30 in diam. bears N 76. E. 19. links dist.  
 La B. Oak 15. " " " S. 34. E. 37. " "  
 Land on the 1<sup>st</sup>  $\frac{1}{2}$  of this mile is level & poor. on the  
 2nd  $\frac{1}{2}$  rich. Timber. Oak. Ash. Buck. Sugar. &  
 Poplar very brushy.

East On a Random line between Sec. 21 & 28. T. 13. N. R. 2. W.  
 23 00 To a Brook 50 links wide. Course, supposed to be  
 run S. West.  
 40. 00 Set a temp. post for the cor. of  $\frac{1}{4}$  Sec.  
 50. 39 Intersect the N. & S. line 3 links north of the post  
 cor. of Sec. 21. 22. 27. & 28. Land level and  
 very brushy, inclining to be wet. Timber. Oak.  
 Hickory & Ash. Buck. Sugar. Walnut. Elm & Sycamore.

West On the true line between Sec. 21. & 28. T. 13. N. R. 2. W.  
 40. 1992 Set the temp. post for the cor. of  $\frac{1}{4}$  Sec. at the over. dist. on  
 the true line from which a  
 Buck 20 in diam. bears N 7. E. 4. links dist. La  
 No. 8. " " " S. 32. W. 37. " "  
 50. 39 To the post cor. of Sec. 20. 21. 28. & 29.

North Between Sec. 20. & 21. T. N. 13. N. W. N. 2. W.  
 9. 50 To a B. Walnut 48 in diam. in the line  
 40. 00 Set a post for the cor. of  $\frac{1}{4}$  Sec. from which a  
 Syc 23 in diam. bears N 45. W. 10. links dist. La.



T. N. 13. A. R. N. 2. W. 2nd Mer. Ind.

- Buck 9. in diam. bears N 65. E. 6 links dist.
43. 00 A Creek. Course, from the place we intersected it S. 80 W. run in the creek.
53. 00 Left the creek supposed to be a Branch of Oak River & bore off to the **West**
56. 34 To a Buck 9. in diam. in the line
75. 73 To a " " " " " "
80. 00 Set a post for the cor. of Sec. 16. 17. 20. & 21. from which a Buck 19. in diam. bears N 69. E. 19. links dist. La
- St. 20. " " " " " " N 75. W 35. " "
- Land level and very brushy. Timber, Oak. Ash. Buck. Poplar, & some Walnut & Elm.

- East On a Random line between Sec. 16. & 21. T. 13. N. R. 2 W.
40. 00 Set the temp. post for the cor. of 1/4 Sec.
80. 81 Intersect the N & S line 21. links north of the post cor. of Sec. 15. 16. 21. & 22. Land all briars & evident signs of being set, a considerable part of hewn; Timber Buck. Poplar. Ash. Sycamore. Swamp Ash. Oak. & No. Locust.

- West On the True line between Sec. 16. & 21. T. 13. N. R. 2 W.
40. 40 1/2 Set the temp. post for the cor. of 1/4 Sec. at the aver. dist. on the true line from which a
- Buck 14. in diam. bears S 61. W. 12 links dist. La
- St. 18. " " " " " " N 21. E. 30. " "
80. 81 Set the post cor. of Sec. 16. 17. 20 & 21. Cor. 2. 1817.

- North Between Sec. 16. & 17. T. N. 13. A. R. N. 2. W.
1. 16 To an Elm 30. in diam. in the line
15. 00 To a Creek 75. links wide; Course S. W.
33. 00 To a Burr Oak 24. in diam. in the line
40. 00 Set a post for the cor. of 1/4 Sec. from which an
- Elm 12. in diam. bears — 48. — and an

T. N. 13. A. R. N. 2. W. 2nd Mer. Ind.

- Elm 8. in diam. bears S 64. W. 32. links dist. La
47. 50 To a Creek 70. links wide; Course S. E.
64. 23 To a Hickory 9. in diam. in the line
71. 50 To a Buck 9. " " " " "
80. 00 Set a post for the cor. of Sec. 8. 9. 16. & 17. from which
- St. Oak 23. in diam. bears S 61. W. 25. links dist. La
- Buck 12. " " " " " " S 62. W. E. 15. " "
- Land level & rich. & very brushy, with water plants
- Timber Oak. Ash. Buck. Elm. & Sugar.

- East On a Random line between Sec. 9. & 16. T. 13. N. R. 2 W.
40. 00 Set the temp. post for the cor. of 1/4 Sec.
47. 50 To the Cor. of a Buck 75. links wide; Course S. W.
81. 50 Intersect the N & S line 18. links South of the post cor. of Sec. 9. 10. 15. & 16. Land level & rich, but very much of land continually overflowed with water.
- Timber. Buck. Oak & Ash

- West On the True line Between Sec. 9. & 16. T. 13. N. R. 2 W.
40. 75 Set the temp. post for the cor. of 1/4 Sec. at the aver. dist. on the true line from which a
- Buck 20. in diam. bears S 17. E. 16. links dist. La
- St. 20. " " " " " " N 26. W 14. " "
81. 50 To the post cor. of Sec. 8 9. 16. & 17.

- North Between Sec. 2 & 9. T. N. 13. A. R. N. 2. W.
6. 50 Left low land & entered dry Land.
7. 39 To a St. Oak 36. in diam. in the line
38. 42 To a Buck 24. " " " " "
40. 00 Set the post for the cor. of 1/4 Sec. from which a
- Buck 11. in diam. bears S 57. E. 4 links dist. La
- St. 13. " " " " " " N 11. E. 22. " "
44. 90 To a Buck 14. in diam. in the line



T. N. 13. A. R. N. 2. W. 2<sup>nd</sup> Mer. Ind.

- 70 00 To a Spring 4 links wide. Course S. W.  
 71. 40 To a Buck 15. in diam. in the line  
 80. 00 Set a post for the cor. of Sec. 4. 5. 8. & 9. from which a  
 Buck 17. in diam. bears S. 70<sup>th</sup> E. 18 links dist. da  
 No. 17. " " " S. 33. W. 32. " "  
 Land level & Inmate Timber Buck, Sugar. Ash  
 Poplar & Oak.

- East Between Sec. 4 & 9. T. N. 13. A. R. N. 2. W. Random  
 40. 00 Set the temp<sup>st</sup> post for the cor. of 1/4 Sec.  
 81. 14 Intersect the N. & S. line 22 1/2 links North of the  
 post cor. of Sec. 3. 4. 9. & 10. Land level & rich  
 Timber, Buck, Poplar. Oak. Ash. Walnut & W. Oak.

- West On the True line between 4 & 9. T. N. 13. A. R. N. 2. W.  
 40. 53 Set the temp<sup>st</sup> post for the cor. of 1/4 Sec. at the aver. dist.  
 on the true line from which a  
 W. Oak 30. in diam. bears S. 24. W. 8 links dist. da  
 Buck 12. " " " S. 12. W. 25 " "  
 81. 14 To the post cor. of Sec. 4. 5. 8 & 9.

- North Between Sec. 4 & 5. T. N. 13. A. R. N. 2. W.  
 3. 06 To a Buck 36. in diam. in the line.  
 5. 00 To a Buck 60 links wide. Course S. W. Entered Bottom.  
 33. 00 To a Burr Oak 48 in diam. in the line  
 40. 00 Set a post for the cor. of 1/4 Sec. from which a  
 Grey Ash 7 in diam. bears S. 15. E. 33 links dist. da  
 Hickory 13. " " " S. 8. W. 32. " "  
 48 72 To a Hickory 22 in diam. in the line  
 74. 00 To a Buckeye? " " " " "  
 75 95 Intersect the North Boundary 50 links N. of the post  
 cor. of Sec. 32 & 33. T. 14. A. R. N. 2. W. and set a  
 post for the cor. of Sec. 4 & 5. from which a

T. N. 13. A. R. N. 2. W. 2<sup>nd</sup> Mer. Ind.

- Hickory 9. in diam. bears S. 65. E. 16 links dist. da  
 Burr Oak 13. in. " " S. 24. W. 38. " "  
 Land level & rich. wet Bottom. Timber Ash. Poplar.  
 Hickory. Burr Oak. Buckeye. Oak & Walnut. Oct 4<sup>th</sup> 1874.

- North Between Sec. 31 & 32 T. N. 13. A. R. N. 2. W.  
 14. 23 To a Hickory 15. in diam. in the line  
 38. 16 To a Buck 20. " " " " "  
 40. 00 Set a post for the cor. of 1/4 Sec. from which a  
 B. Ash in diam. bears S. 59. W. 22 1/2 links dist. da  
 Buck 12. " " " S. 44. E. 17. " "  
 41. 10 To a Poplar 36. in diam. in the line  
 80. 00 Set a post for the cor. of Sec. 29. 30. 31. & 32. from which  
 a Buck 8 in diam. bears South 7 links dist. da  
 No. 30. " " " S. 85. W. 15. " "  
 Land level & Inmate Timber Buck. Poplar & B. Ash.

- East On a Random line between Sec. 29. & 32. T. N. 13. A. R. N. 2. W.  
 40. 00 Set the temp<sup>st</sup> post for the cor. of 1/4 Sec.  
 80. 53 Intersect the N. & S. line 1. 18 links North of the post  
 cor. of Sec. 28. 29. 32. & 33. Land level and Inmate  
 Oak; Timber Buck. Poplar & Black Ash.

- West On the True line between Sec. 29. & 32. T. N. 13. A. R. N. 2. W.  
 10. 26 1/2 Set the temp<sup>st</sup> post for the cor. of 1/4 Sec. at the aver. dist.  
 on the true line from which a  
 Buck 12. in diam. bears S. 34. E. 27 links dist. da  
 Hickory 14. " " " S. 66. W. 28. " "  
 80. 53 To the post cor. of Sec. 29. 30. 31. & 32.

- North Between Sec. 29. & 30. T. N. 13. A. R. N. 2. W.  
 2. 00 Entered Swamp  
 3. 50 To a B. Ash 20 in diam. in the line.







## T. N° 13. A. R. N° 2. W. 2nd Mer. Ind.

39. 39 To a Birch 30 links wide; Course N  
 40. 00 Set a post for the cor. of 1/4 Sec. from which a  
 Maple 9. in diam. bears S. 26. W. 10. links dist. & a  
 Willow 8. " " " S. 88. W. 10. " "  
 53. 26 1/2 To an Elm 12. in diam. in the line.  
 69. 00 Left Swamp.  
 80. 00 Set a post for the cor. of Sec. 19. 20. 29. & 30. from which  
 a Black Ash 18. in diam. bears S. 17. W. 20. links dist.  
 and a W. Oak 6. " " " S. 74. W. 23. " "  
 Land swampy & low. Timber Birch. Poplar & Black Ash.

East Between Sec. 20 & 29. On a Random line T. 13. A. R. 2. W.  
 10. 00 To a Birch 30 links wide. Course South.  
 40. 00 Set the temp. post for the cor. of 1/4 Sec.  
 50. 32 Intersect the North & South line 11. links North of the  
 post cor. of Sec. 20 & 21. 28 & 29.  
 Land on the 1st 1/2 mile rich; on the 2nd 1/2 mile poor.  
 Timber Buckeye. Birch B. Ash. Elm Poplar  
 Hickory & Hackberry. Oct 1<sup>st</sup> 1819.

West On the True line Between Sec. 20 & 29. T. 13. A. R. 2. W.  
 40. 16 Set the temp. post for the cor. of 1/4 Sec. at the aver. dist. on  
 the true line from which a  
 Buckeye 12 in diam. bears N. 66. E. 11 links dist. & an  
 Elm 24 " " " S. 20. W. 77. " "  
 80. 32 To the post cor. of Sec. 19. 20. 29. & 30.

North Between Sec. 11 & 20. T. 13. A. R. 2. W.  
 11. 50 To a W. Oak 24. in diam. in the line.  
 36. 72 To a W. Oak 22. " " " " "  
 40. 00 ~~Set a post~~ for the cor. of 1/4 Sec. from which a  
 Birch 12 in diam. bears N. 31. E. 6. links dist. and a  
 So. 16. " " " S. 21. E. 6. " "

## T. N° 13. A. R. N° 2. W. 2nd Mer. Ind.

14. 17 To a Sugar 20. in diam. in the line  
 79. 95 To a Birch 14. " " " " "  
 80. 00 Set a post for the cor. of Sec. 17. 18. 19. & 20. from which a  
 Birch 11. in diam. bears N. 19. W. 55. links dist. and a  
 So. 20. " " " S. 89. W. 24. " "  
 Land 2nd rate. Timber, Birch. W. Oak. Poplar & Hickory.

East On the Random line between Sec. 17. & 20. T. 13. A. R. 2. W.  
 40. 00 Set the temp. post for the cor. of 1/4 Sec.  
 72. 00 To a Birch 100. links wide; Course N.  
 80. 14 Intersect the A. & S. line 5. links South of the post cor. of  
 Sec. 16. 17. 20 & 21. Land level & 2nd rate. Timber  
 Birch. Sugar Ash. Hickory. W. Oak. B. Ash & Poplar.

West On the True line Between Sec. 17. & 20. T. 13. A. R. 2. W.  
 40. 07 Set the temp. post for the cor. of 1/4 Sec. at the aver. dist. on  
 the true line from which a  
 Sugar 18. in diam. bears N. 33. E. 16. links dist. & a  
 Birch 14. " " " S. 4. W. 30. " "  
 80. 14 To the post for the cor. of Sec. 17. 18. 19. & 20.

North Between Sec. 17. & 18. T. N° 13. A. R. N° 2. W.  
 20. 50 To a B. Ash 18. in diam. in the line  
 36. 89 1/2 To a W. Oak 36. in diam. in " " "  
 40. 00 Set the post for the cor. of 1/4 Sec. from which a  
 Birch 14 in diam. bears N. 62 1/2 E. 8 1/2 links dist. & a  
 B. Gum 12. " " " N. 87. W. 13. " "  
 43. 72 To a Sugar 20. in diam. in the line  
 75. 00 To a Birch 20. " " " " "  
 80. 00 Set a post for the cor. of Sec. 7. 8. 17. & 18. from which a  
 Sugar 10. in diam. bears S. 41. W. 10 1/2 links dist. & a  
 Birch 6. " " " S. 5. E. 17. " "  
 Land level & 2nd rate. Timber Birch. Sugar. Poplar. Hickory.



T. N 13. A. R. N. 2. W. 2nd Mer. Ind.

Black Ash and W Oak.

East On a Random line between Sec. 8 & 17. T. 13. N. R. 2. W.  
 40. 00 Set the temp<sup>d</sup> post for the cor. of  $\frac{1}{4}$  Sec.  
 48. 50 To a Bush 31. links wide; Course South.  
 79. 78 Intersect the S. & T. line 21. links North of the post cor.  
 Sec. 8. 9. 16 & 17. Land level and 2nd rate. Timber  
 Buck. Poplar. B. Ash & W Oak.

West On the True line between Sec. 5 & 17. T. 13. N. R. 2. W.  
 39. 89 Set the temp<sup>d</sup> post for the cor. of  $\frac{1}{4}$  Sec. at the aver. dist.  
 on the true line from which a  
 Sugar 5 in diam. bears S. 82 E. 10 links dist. La  
 Buck 18 " " " S. 83 W. 27 " "  
 79. 78 To the post cor. of Sec. 7. 8. 17. & 18.

North Between Sec. 7. & 8. T. N 13. A. R. N. 2. W.  
 17. 00 To a W. Oak 22 in diam. in the line  
 40. 00 Set a post for the cor. of  $\frac{1}{4}$  Sec. from which a  
 Sugar 6 in diam. bears N. 64 E. 134 links dist. La  
 Sec. 8. " " " S. 64 W. 304 " "  
 45. 30 To a Buck 10 in diam. in the line  
 79. 59 To an Elm 24. " " " "  
 50. 00 Set a post for the cor. of Sec. 5. 6. 7. & 8. from which a  
 W. Oak 15 in diam. bears N. 22 E. 18 links dist. and a  
 Hickory 2 in " " S. 65 W. 10 " "  
 Land level & the first & 2nd rate. 2nd & 3rd rate.  
 Timber. Buck. W. Oak. B. Ash. & B Oak.

East On a Random line between Sec. 5 & 8. T. 13. N. R. 2. W.  
 40. 00 Set a temp<sup>d</sup> post for the cor. of  $\frac{1}{4}$  Sec.  
 70. 00 To a Bush 10 links wide; Course South.  
 79. 71 Intersect the S. & T. line 22 links North of the post cor. of

T. N 13. A. R. N. 2. W. 2nd Mer. Ind.

Sec. 4. 5. 8 & 9. Land level & 2nd rate. Timber  
 Buck. Poplar. & W. Oak.

West On the True line between Sec. 5. & 8. T. 13. N. R. 2. W.  
 39. 89 Set the temp<sup>d</sup> post for the cor. of  $\frac{1}{4}$  Sec. at the aver. dist. on  
 the true line from which a  
 Swamp Ash 6 in diam. bears N. 76 E. 6 links dist. La  
 " Sec. 4. " " " S. 87 W. 6. " "  
 79. 71 To the post cor. of Sec. 5. 6. 7. & 8.

North Between Sec. 5. & 6. T. N 13. A. R. N. 2. W.  
 18. 05 To a Buck 14 in diam. in the line  
 37. 70 To a Sec. 13. " " " "  
 40. 00 Set the post for the cor. of  $\frac{1}{4}$  Sec. from which a  
 Buck 22 in diam. bears S. 49 E. 10 links dist. La  
 Sec. 13. " " " S. 9 W. 22 " "  
 44. 39 To a Hickory 15 in diam. in the line  
 64. 50 To a Bush 10 links wide; Course S. E.  
 65. 50 To a Buck 13 in diam. in the line  
 79. 52 Intersect the North Boundary 55 links East of the post  
 cor. of Sec. 30. & 31. T. 14. N. R. 2. W. Set a post for the  
 cor. of Sec. 5. & 6. from which a Oct. 5<sup>th</sup> 1879.  
 B. Ash 20 in diam. bears N. 44 W. 26 links dist. La  
 Swamp Ash 6 in " " S. 53 W. E. 22 links dist. &  
 Land level & 2nd rate. Timber. Oak. Buck. &.

West Between Sec. 30. & 31. T. 13. N. R. 2. W.  
 16. 00 To a Hickory 23 in diam. in the line  
 34. 50 To a bush 75 links wide; Course South  
 40. 00 Set the post for the cor. of  $\frac{1}{4}$  Sec. from which a  
 Ash 3 in diam. bears S. 22 W. 6 links dist. and a  
 Elm 20 " " " S. 63 W. 23. " "  
 65. 00 Cutting high & dry Lang.



## T. N. 13. S. R. S. 2. W. 2nd Mer. Ind.

68.32 To a Grey Ash 27. in diam. in the line  
 75.00 Intersect the West Boundary 11. links South of the post  
 cor. of Sec. 25. & 36. T. N. 13. S. R. S. 2. W. & set a post  
 for the cor. of Sec. 30. & 31. from which a  
 Buck 22. in diam. bears N. 35. W. 15. links dist. & a  
 Loc. 20. " " " S. 55. E. 40. " "  
 Land mostly overgrown; Bottom Timber. Buck.  
 Sugar. Walnut. Ash. & Elm.

West Between Sec. 19 & 30. T. N. 13. S. R. S. 2. W.  
 4.40 To a Red Oak 12 in diam. in the line  
 34.00 To a Buck 10. links wide; Course S. W.  
 40.00 Set a post for the cor. of 1/4 Sec. from which a  
 Buck 7. in diam. bears S. 63. W. 25. links dist. & a  
 Loc. 24. " " " N. 35. E. 35. " "  
 40.07 To a Buck 11. in diam. in the line  
 62.50 To a Buck 10 links wide; Course S. W.  
 71.60 To a Buck 12 in diam. in the line  
 75.43 Intersect the West Boundary 48. links South of the post  
 cor. of Sec. 24 & 25. T. N. 13. S. R. S. 2. W. & set a post for the  
 cor. of Sec. 19 & 30. from which a  
 Buck 24 in diam. bears S. 37. W. 13. links dist. & a  
 Hick 14. " " " N. 1. E. 33. " "  
 Land rolling & 2nd rate. Timber Buck. Ash Oak.  
 Sugar. & Hickory. Undergrowth very brushy with spice  
 Hazle & other shrubs.

West Between Sec. 18 & 19. T. N. 13. S. R. S. 2. W.  
 1.50 To a Hickory 12 in diam. in the line  
 40.00 Made the cor. of 1/4 Sec. from which an  
 Buck 12. in diam. from which an  
 Elm 6. " " " bears S. 82. E. 26. links dist. & a  
 Sugar 21. " " " N. 32. W. 32. " "

## T. N. 13. S. R. S. 2. W. 2nd Mer. Ind.

44.26 To a Cherry 9. in diam. in the line  
 16.00 Entered into a Bottom.  
 72.32 To a Burr Oak 22. in diam. in the line  
 75.67 Intersect the West Boundary 71. links South of the post  
 cor. of Sec. 13. & 24. T. N. 13. S. R. S. 2. W. and set a post  
 for the cor. of Sec. 18. & 19. from which a  
 Grey Ash 18. in diam. bears N. 43. E. 10. links dist. & an  
 Elm 21. " " " S. 35. W. 13. " " East 1/2 rich Bottom  
 Land 2nd rate Timber Elm, Walnut. Buck. Sugar &  
 Ash very brushy.

West Between Sec. 7 & 18. T. N. 13. S. R. S. 2. W.  
 3.69 To an Elm 24. in diam. in the line  
 8.00 To a Buck 25. links wide; Course S. W.  
 38.00 To a Buck 22. in diam. in the line.  
 40.00 Set a post for the cor. of 1/4 Sec. from which a  
 Buck 13. in diam. bears N. 61. W. 10. links dist. & a  
 Loc. 12. " " " S. 66. E. 43. " "  
 112.00 To a Buck 15. in diam. in the line  
 68.10 To a B. Gum 12. " " " " "  
 70.00 To a Buck 10 links wide; Course S. E.  
 76.03 Intersect the West Boundary 23. links South of the post  
 cor. of Sec. 12 & 13. T. N. 13. S. R. S. 2. W. and set a post  
 for the cor. of Sec. 7 & 18. from which a Oct. 5<sup>th</sup> 1879.  
 Buck 6. in diam. bears S. 58. W. 5. links dist. & an  
 Ironwood 6. " " " S. 69. E. 30. " "  
 Land 2nd rate; Timber. Buck. Sugar. Ash. Poplar. & Gum

West Between Sec. 6 & 7. T. N. 13. S. R. S. 2. W.  
 16.10 To a W Oak 36 in diam. in the line  
 29.23 To a Buck 18. " " " " "  
 40.00 To a post for the cor. of 1/4 Sec. from which a  
 Buck 12. in diam. bears S. 71. E. 20. links dist. & a



T. 13. N. R. 2. W. 2. Mer. Ind.

Buckeye 42 in diam. bears S. 35. W. 32. links dist.  
 45 60 To a Buck 18 in diam. in the line  
 76 60 Intersect the West Boundary 24 links South of the  
 post cor. of Sec. 1 & 12, T. 13. N. R. 2. W. 2. and set a  
 post for the cor. of Sec. 6 & 7. from which a  
 Buck 18 in diam. bears S. 27. E. 40 links dist. & a  
 So. 6 " " " S. 76. W. 34 " "  
 Land level & Ind. sale, Timber Beech, Oak, Hickory  
 and Sugar. Oct. 6<sup>th</sup> 1819.

Surveyed by  
 John Milroy S. I.

Comp?

Certify that the foregoing Transcript of the field  
 notes of Township N. 13. North of Range N. 27.  
 2<sup>nd</sup> Meridian, Ind. has been compared with  
 the Original notes in this Office and found to be  
 correct.

Surveyor General's Office  
 Cincinnati, Dec. 1. 1841

T. 13. N., R. 2. W. 2. Mer. Ind.

West Boundary. Var. 6° 15' E  
 North on the E. Boundary of Sec. 30, T. 13. N., R. 3. W.  
 30.00 a Creek 20 lbs. wide course S. W.  
 40.00 set g. sec. post from which  
 an Elm 27 in. diam. bears N. 16. E. 9 lbs. dist. 8  
 a Buckeye 12 " " " S. 19. W. 26 " "  
 57.00 a Creek 70 lbs. wide course W.  
 68.00 enter Swamp  
 73.00 passed it  
 80.00 set post cor. of sec. 25 & 36 from which  
 a Beech 15 in. diam. bears S. 41. E. 51 lbs. dist. 8  
 a So. 24 " " " West 8 " "  
 Land generally low wet June 14. 1819

North on the E. Boundary of Sec. 25, T. 13. N., R. 3. W.  
 40.00 set g. sec. post from which  
 a Beech 9 in. diam. bears N. 64. W. 16 lbs. dist. 8  
 a So. 24 " " " S. 82. E. 30 " "  
 45.00 a Brook 5 lbs. wide course E.  
 50.00 set post cor. of sec. 24 & 25 from which  
 a Beech 12 in. diam. bears N. 15. E. 18 lbs. dist. 8  
 a Hickory 8 " " " S. 40. W. 5 " "  
 Land a little rolling, Beech, Sugar, Ash, Oak,  
 Hickory, Elm - good farming land

North on the E. Boundary of Sec. 24, T. 13. N., R. 3. W.  
 40.00 set g. sec. post from which  
 a Beech 11 in. diam. bears S. 3. E. 30 lbs. dist. 8  
 a W. Oak 27 " " " N. 51. E. 2 " "  
 50.00 set post cor. of sec. 13 & 24 from which  
 an Elm 11 in. diam. bears S. 77. W. 21 lbs. dist. 8  
 a Buckeye 8 " " " N. 64. E. 35 " "  
 Land level, timber same, middling good farm-  
 ing land, part rather wet

North on the E. Boundary of Sec. 13, T. 13. N., R. 3. W.  
 1.00 a Brook 20 lbs. wide course E.



